

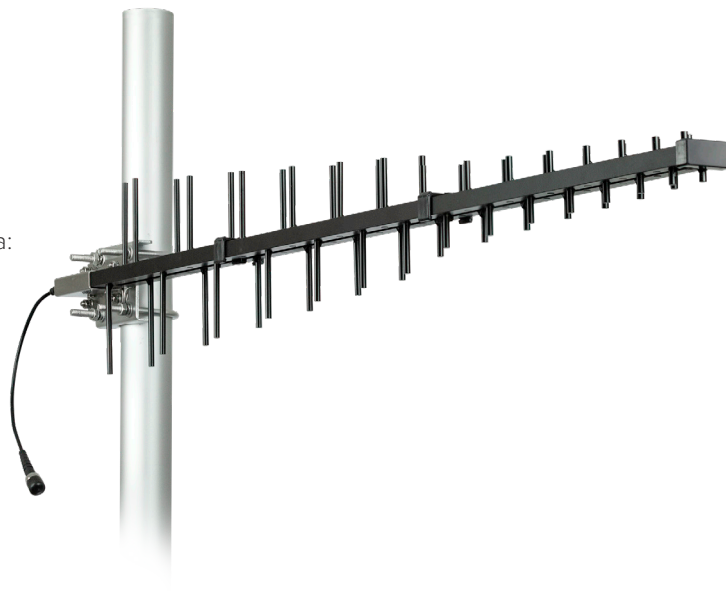
High Gain LPDA Antenna

SKU: 311228

MSRP: \$249.99

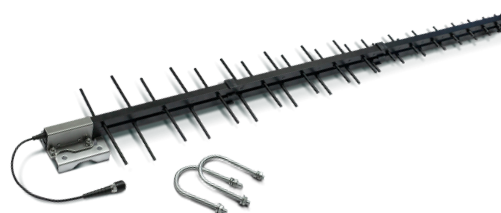
FEATURES

- Works on all worldwide cellular bands for voice and data: LTE/CDMA/GSM/UMTS/AWS
- High gain antenna for WilsonPRO cellular repeater/boosters
- Designed for building exterior installation; direct at cell tower for best signal
- Rugged and waterproof for all weather operation
- Simple install kit with tilt/swivel bracket for 1.5" to 2" diameter pipe/mast
- 2 year warranty



⚠️ WARNING: This product can expose you to chemicals including Nickel, which is known to the State of California to cause cancer, and Bisphenol A, which is known to the State of California to cause birth defects or other reproductive harm. For more information go to www.P65Warnings.ca.gov

Kit Includes



High Gain LPDA Antenna with mounting hardware

Specifications

ELECTRICAL

Frequency Band (MHz)	698-806	806-960	1710-1880	1900-2200	2200-2700
Peak Gain (dBi)	12.0	12.0	12.9	13.1	11.2
VSWR	<2:1		<2:1		
Polarization	Linear				
Half-Power Azimuth Beamwidth (°)	60	60	38	46	44
Half-Power Elevation Beamwidth (°)	46	42	30	34	34
Impedance (Ω)	50				
Maximum Power (W)	50				

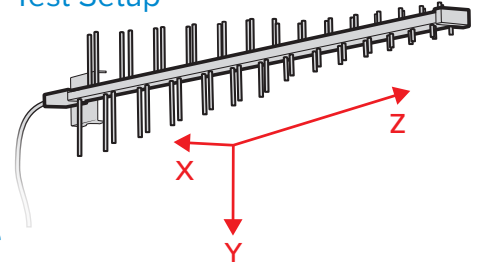
MECHANICAL

Model	311228
Connector	N-Female
Length (in / cm)	44.0 / 111.7
Antenna weight (lb / kg)	3.5 / 1.5
Rated Wind Velocity (Mph)	130
Radiator Material	Aluminum
Pole Mount (in / cm)	1.5-2.0 / 3.8-5.0

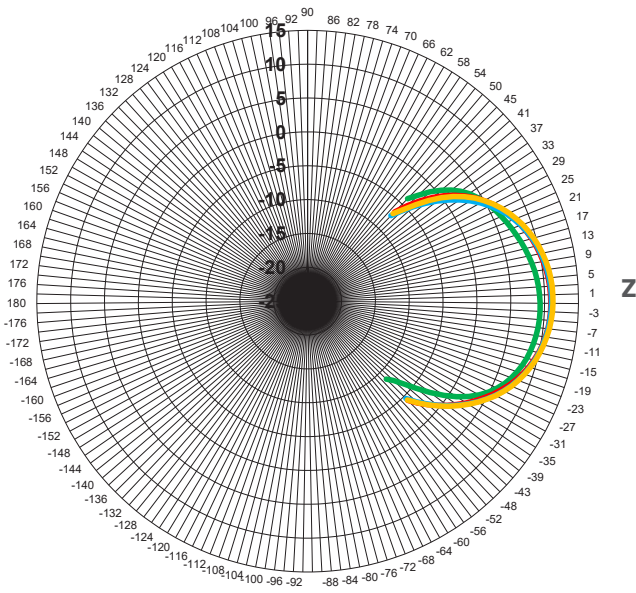
Radiation Patterns, 700-960 MHz

700 MHz 800 MHz 900 MHz 960 MHz

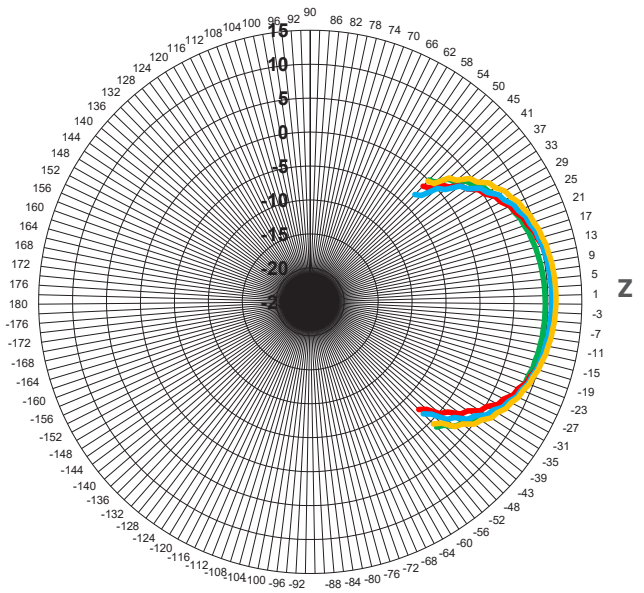
Test Setup



XY Plane



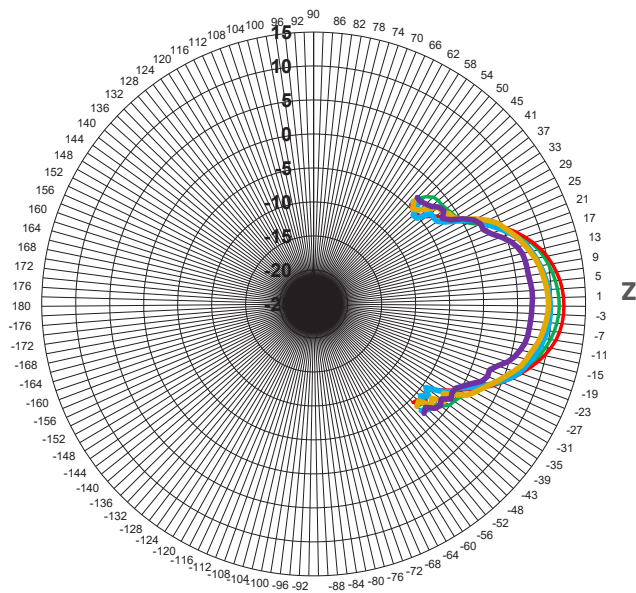
YZ Plane



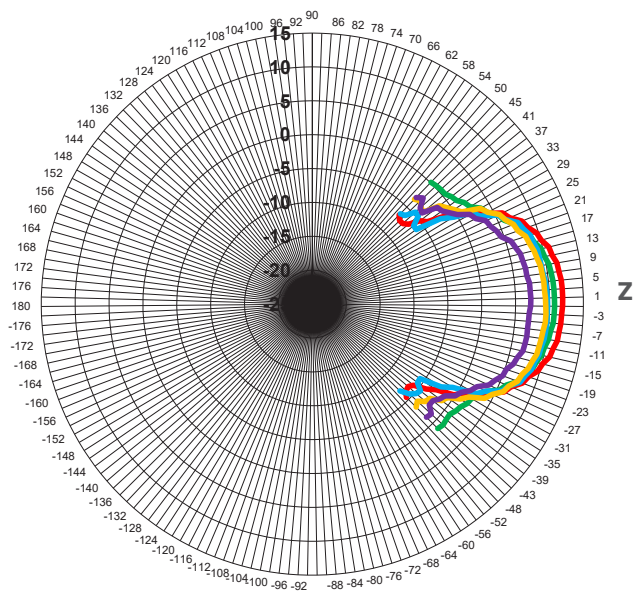
Radiation Patterns, 1700-2200 MHz

1700 MHz 1900 MHz 2200 MHz 2400 MHz 2700 MHz

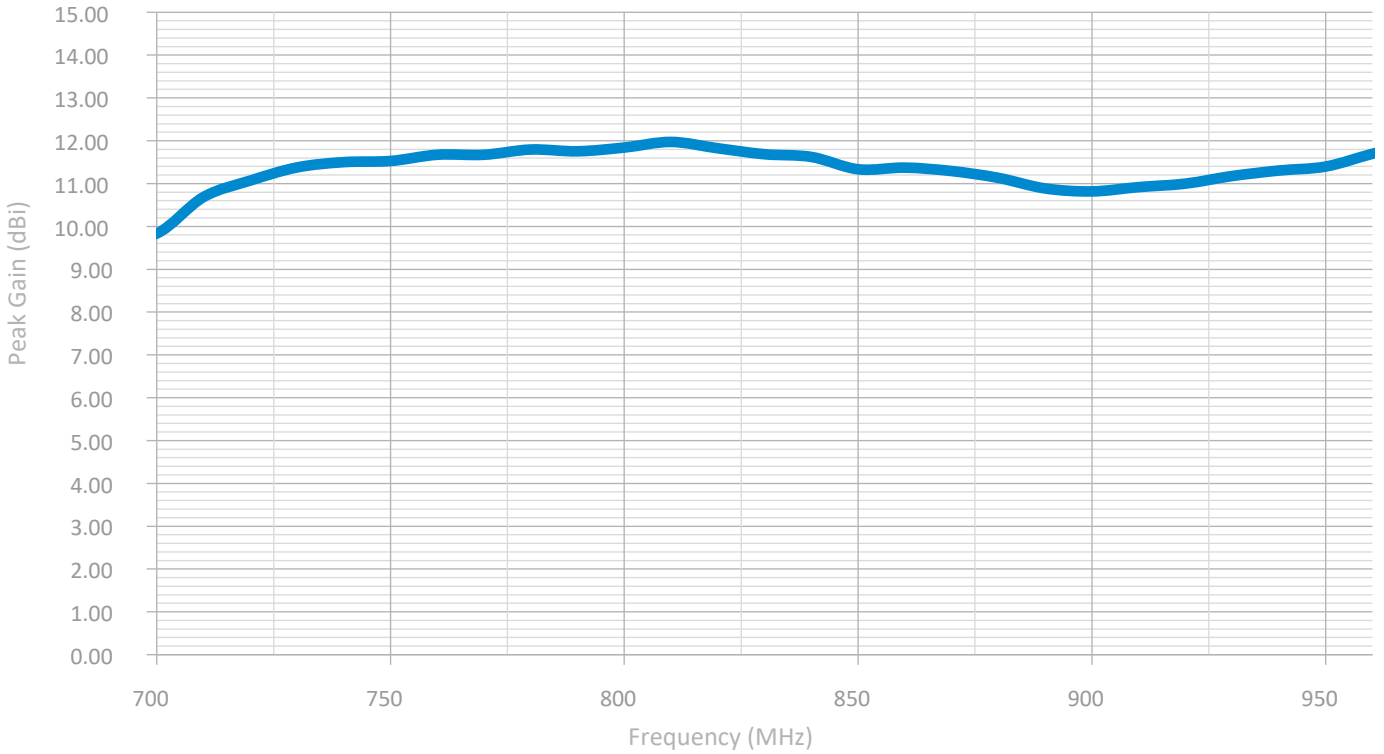
XY Plane



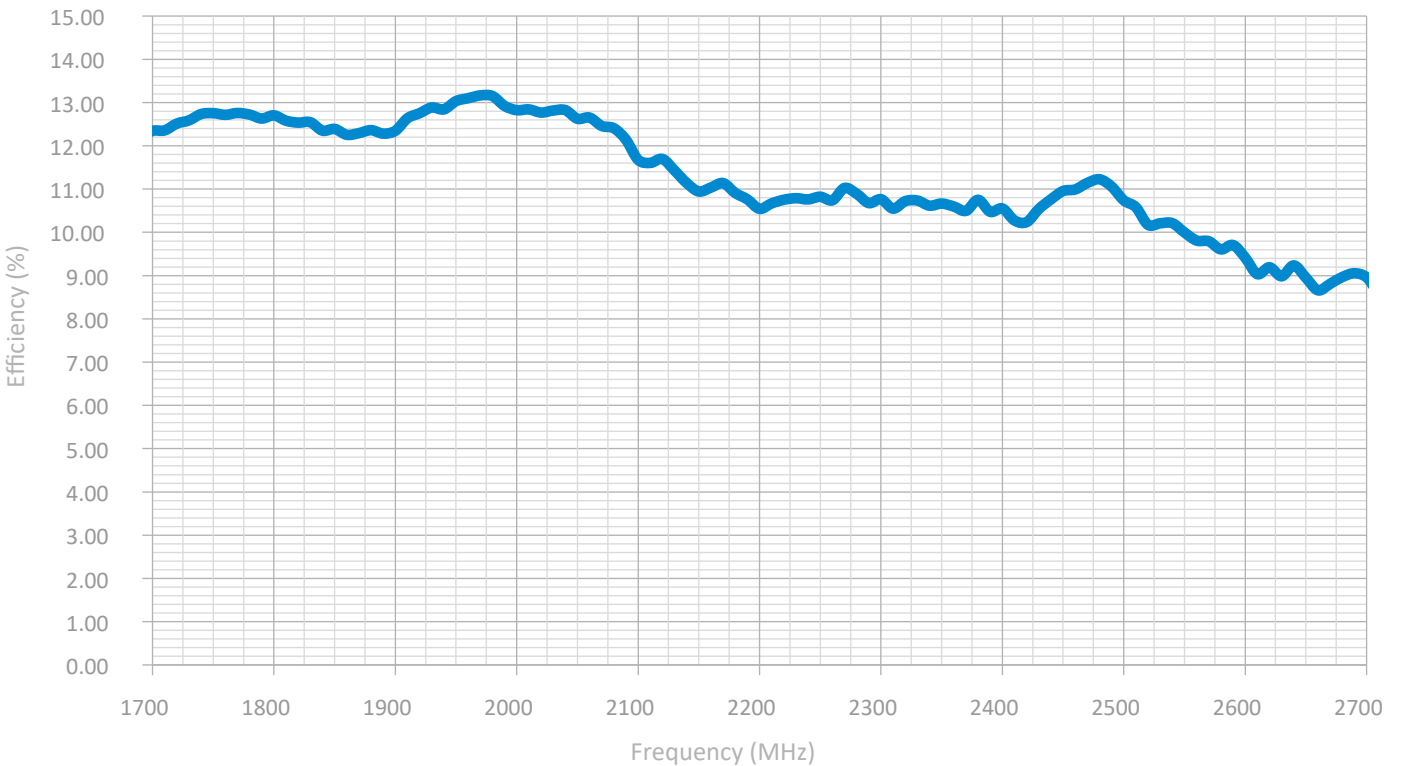
YZ Plane



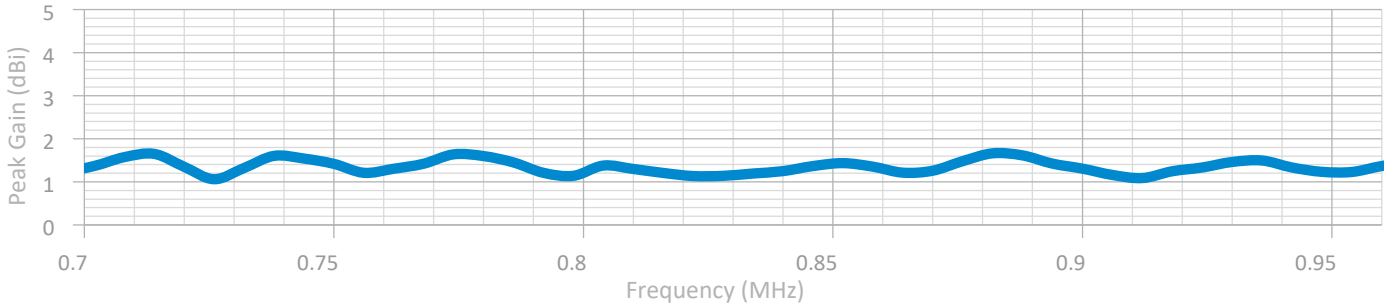
Peak Gain Low Band



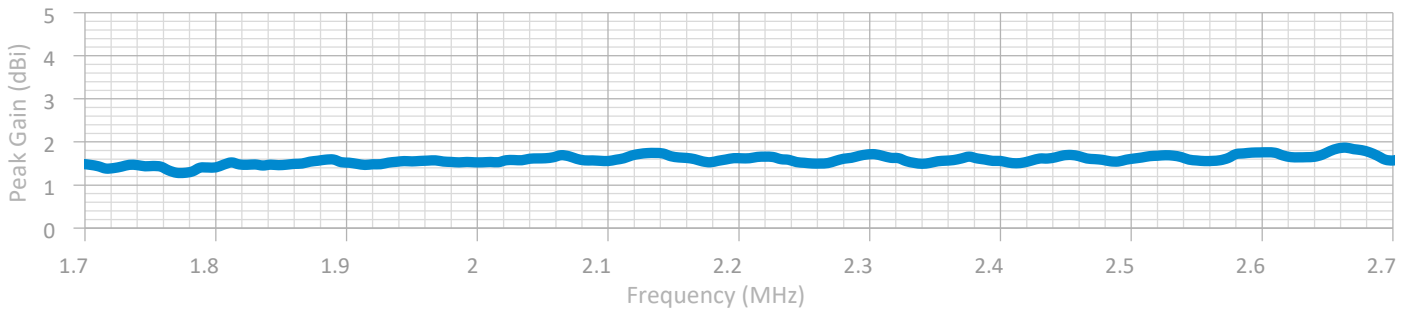
Peak Gain High Band



VSWR Low Band



VSWR High Band

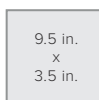


Package Dimensions

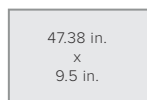
47.38 L x 3.5 W x 9.5 H



FRONT



SIDE




TOP/BOTTOM



WEIGHT

Support

 2 Year Warranty

Email: support@wilsonelectronics.com

Website: <http://support.weboost.com>

Phone: +1 866 294 1660 Monday to Saturday

* **WARNING:** Cancer and Reproductive Harm - www.P65Warnings.ca.gov.

UPC



FOR PARTNER'S USE