

# Home Inside Antenna Standard

SKU: 314444

MSRP: \$99.99

Product Web Page:



## FEATURES

- Works on all worldwide cellular bands for voice and 4G data: LTE/CDMA/GSM/UMTS/AWS
- High performance for cellular repeater-boosters
- High gain signal output
- Boost 698-960 & 1710-2700 MHz cellular frequencies
- Designed for building interior installation
- High efficiency and compact design
- Boosts voice and data
- Simple install kit with wall mount bracket and desk stand
- 2-year warranty



## Kit Includes



Home Inside  
Antenna

Wall Mount w/3M  
Strips & Hardware

## Specifications

### ELECTRICAL

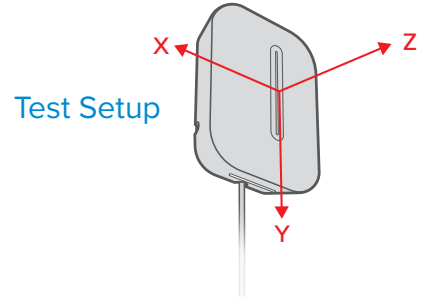
Frequency Band (MHz)	698-806	806-960	1710-1880	1900-2200	2200-2700
Peak Gain (dBi)	5.75	6	7.3	7.33	7.62
Efficiency (%)	65.80	63.34	66.77	55.19	55.17
VSWR	<1.5:1		<1.5:1		
Polarization	Horizontal				
Half-Power Azimuth Beamwidth (°)	79	72	56	51	55
Half-Power Elevation Beamwidth (°)	87	89	86	75	48
Front-to-Back Ratio (dB)	>10		>17	>15	>12
Impedance (Ω)	50				
Maximum Power (W)	50				

### MECHANICAL

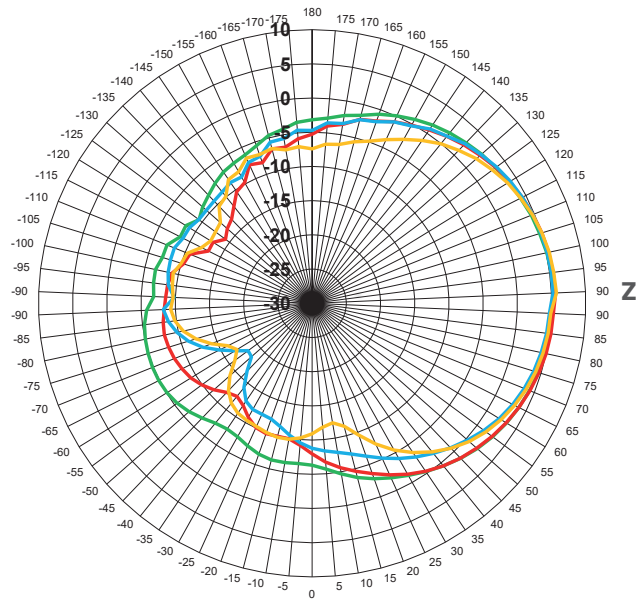
Model	314444
Connector	F- Female
Dimensions (in/mm)	8.875x7.125x2.625 / 225.4x180.9x66.6
Shipping Dimensions (in/mm)	11.5x7.83x3.5 / 292.1x198.8x88.9
Antenna weight (lb/kg)	1.75 / .79
Packing weight (lb/kg)	1.6 / .72
Radiator Material	PCB & Aluminum
Radome Material	Plastic-ChiMei PC385

## Radiation Patterns, 700-960 MHz

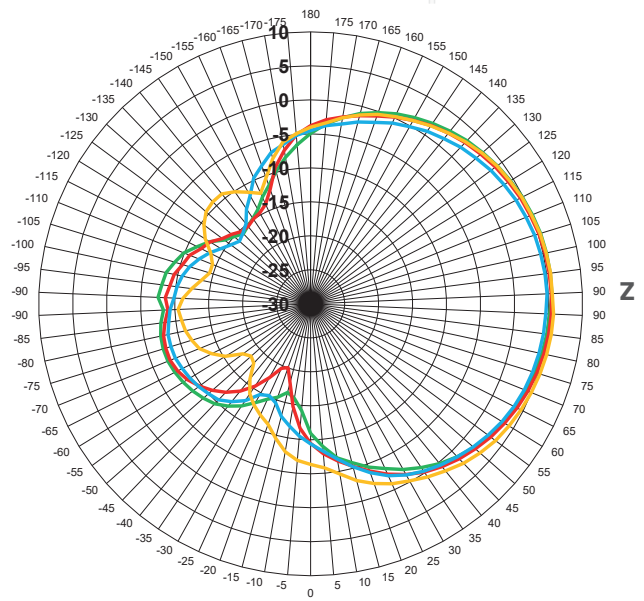
700 MHz    800 MHz    900 MHz    960 MHz



XY Plane



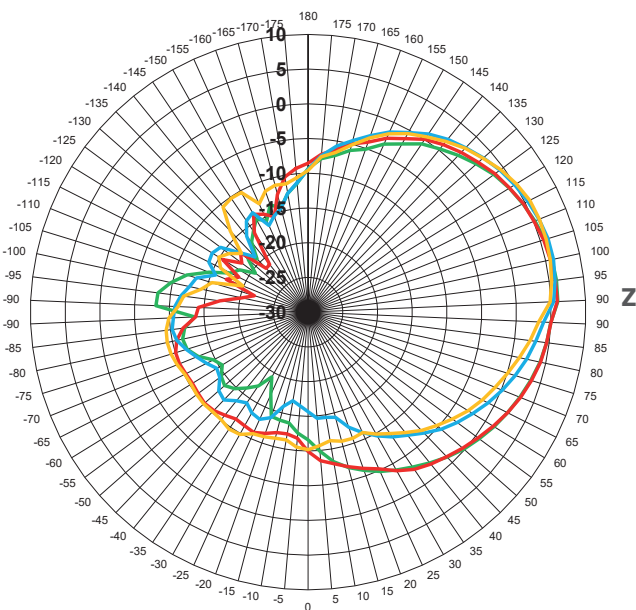
YZ Plane



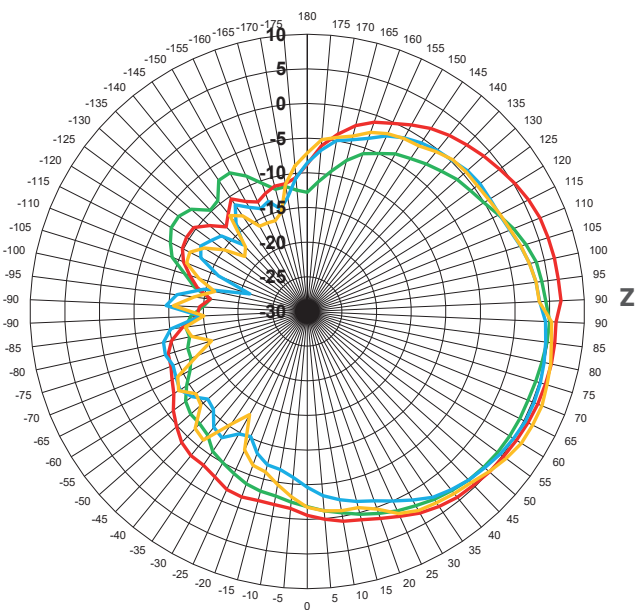
## Radiation Patterns, 1700-2200 MHz

1700 MHz    1900 MHz    2100 MHz    2200 MHz

XY Plane



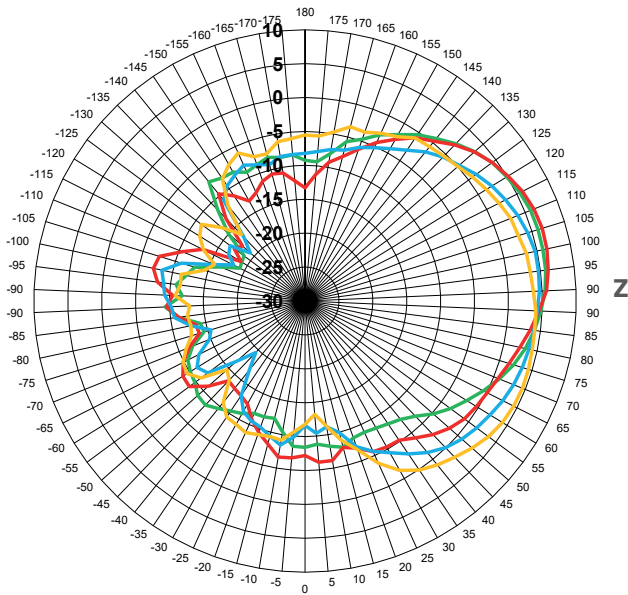
YZ Plane



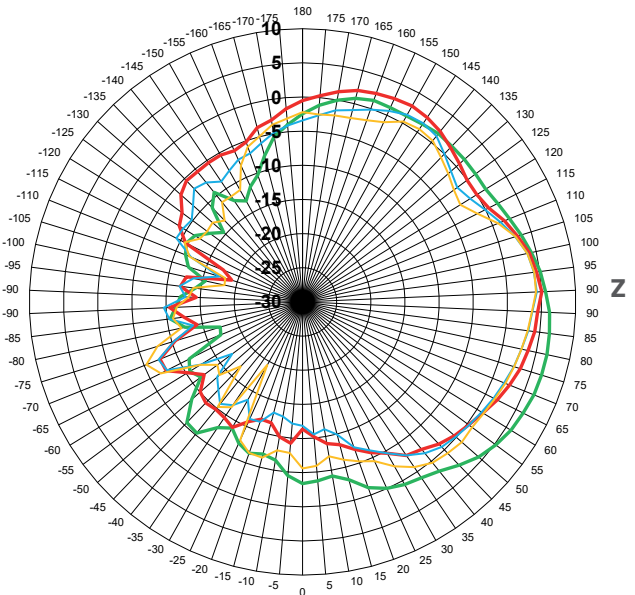
## Radiation Patterns, 2300-2700 MHz

2300 MHz    2500 MHz    2600 MHz    2700 MHz

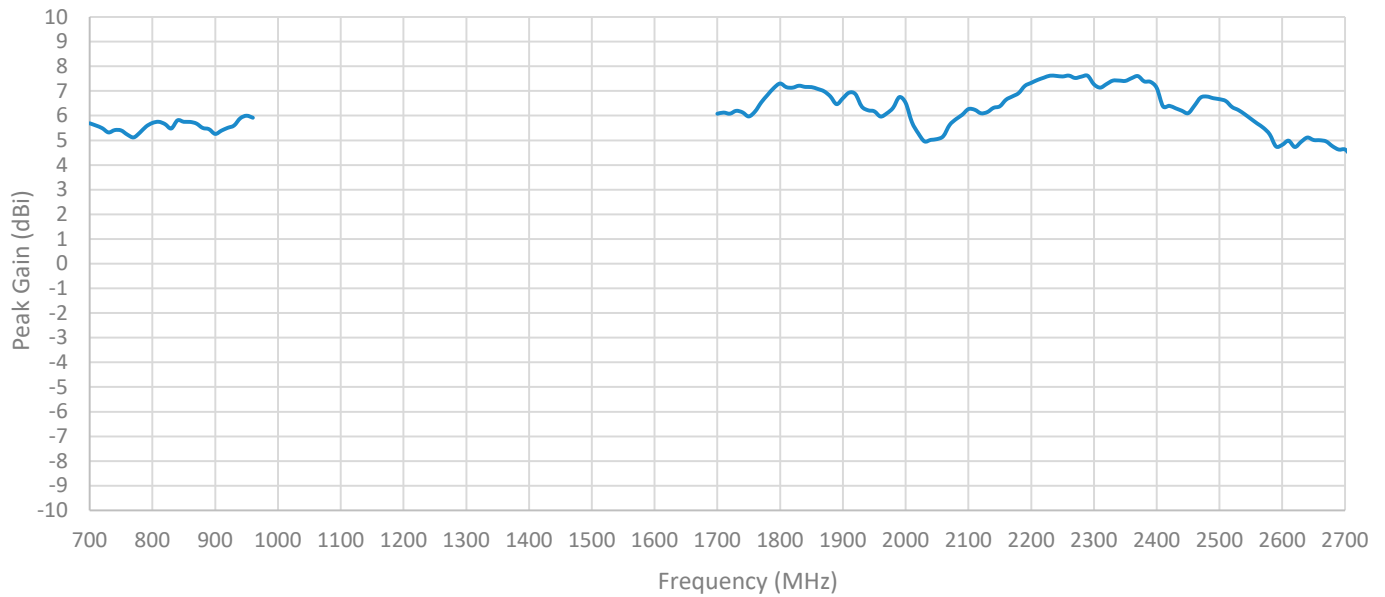
XY Plane



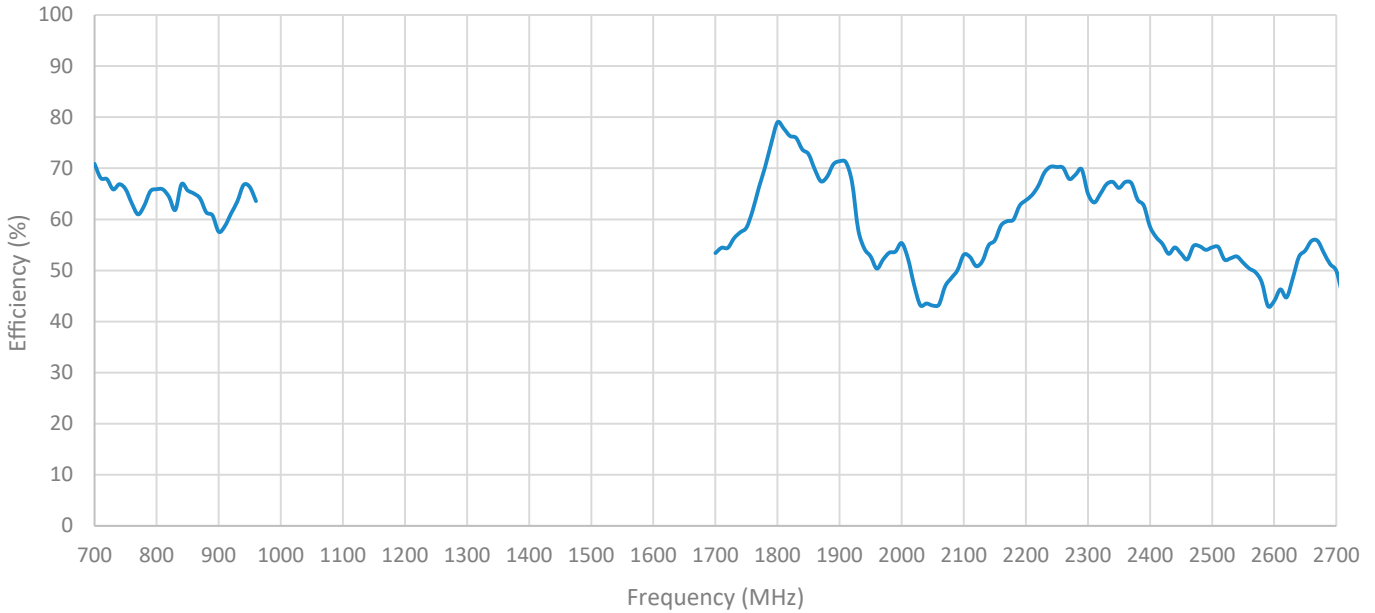
YZ Plane



## Peak Gain

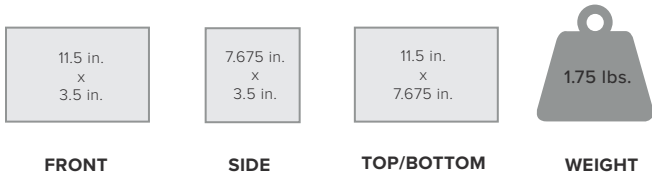


## Efficiency



## Package Dimensions

11.5 L x 7.675 W x 3.5 H



**MASTER CARTON:** 25 L x 18 W x 15 H | 31.74 lbs.



## Support

2 Year Warranty

**Email:** [support@wilsonelectronics.com](mailto:support@wilsonelectronics.com)

**Website:** <http://support.weboost.com>

**Phone:** +1 866 294 1660

Monday to Saturday

## UPC

