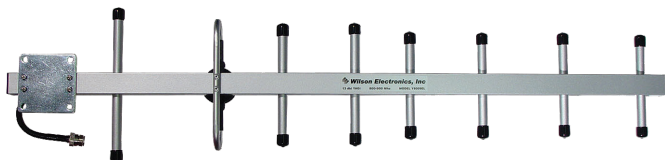


Antenna Installation Guide



Multi-Band Yagi
Cellular Antenna
11 dB 700/800/900 MHz

PART# 301111

Features:

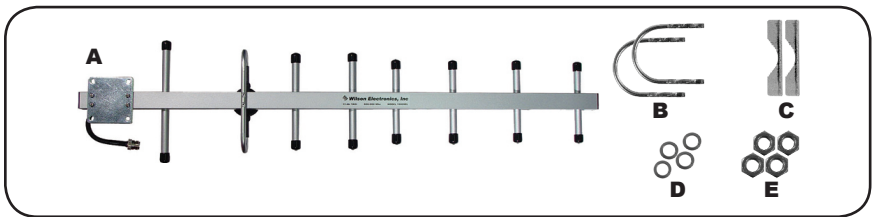
- High-gain
- Directional
- Multi-band
- Pipe mounting hardware included
- Installs Easily

How It Works

Wilson Electronics 11 dB, Yagi Antenna will collect the cell tower signal and send it through the cable to a Signal Booster or directly to the cell phone or cellular data card. When the cell phone or cellular data card transmits, the signal is transferred to the Signal Booster or directly to the antenna and broadcasted back to the cell tower.

Antenna Adapter

An 18-inch external adapter is required to connect the cell phone or cellular data card to the Yagi Antenna. The external adapter is cell phone/data card specific and may be purchased through a local retailer. Refer to Wilson Electronics Adapter Guide to identify the right adapter for your cell phone or cellular data card. The Adapter Guide is available through a local retailer. It is also available on our web site, www.WilsonElectronics.com or you may call Technical Support at 866-294-1660.



Package Contents

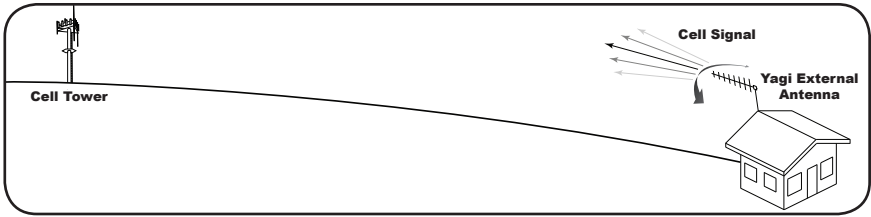
Wilson Electronics Yagi (#301111) contents include (A) Yagi Antenna with N-Female End Connector, (B) 2 - U-Bolts, (C) 2 - Pipe Brackets, (D) 4 - 1/4" Split-Lock Washers, (E) 4 - 1/4"-20 nuts.



Antenna Installation

The Yagi Antenna should be mounted horizontally with the elements vertical. The included mounting bracket is adjustable and will accommodate pipe diameters from 1/2" to 2" (pipe sold separately part# 901117). Mount the Yagi so that there is 3 feet of clearance in all directions around it. Position the Yagi so that it has the most unobstructed line of sight to the cellular service provider's strongest signal. If you are using a wireless signal booster, make sure the Yagi is not pointing across your own roof.

Warning: Lightning protection is recommended for all installations (Wilson Electronics Part #859902-50 Ohm). Take extreme care to ensure that neither you nor the antenna comes near any electric power lines.

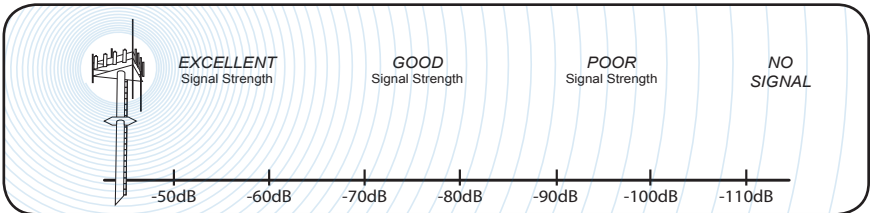


Adjusting the Antenna for Maximum Performance

To adjust the Yagi antenna for best performance, connect it to your cell phone with an external adapter and a length of cable. External antenna adapters and cables are sold separately. Put the cell phone in test mode and turn the Yagi in 10-degree increments while checking the cell phone's signal level. At each point you may need to wait a few seconds as your cell phone updates. To find your phone's test mode, visit www.WilsonElectronics.com. Signal readings usually appear as a negative number (for example, -86). The larger the number, the more powerful the signal (-75 is stronger than -84).

Important: If you are using a wireless signal booster, be sure the Yagi is not pointing across the building in which you are trying to get coverage. The antenna should point away from the building to help prevent oscillation (feedback).

Once you have obtained the strongest signal (see below), fully tighten the mounting hardware. After the Signal Booster and the rest of the system is installed and performing correctly, weatherproof all connections.



Ultra low loss cable is recommended for lengths 20' or greater to prevent significant signal loss. Wilson Electronics offers ultra low loss cable in several lengths from 20-100 feet. Wilson Electronics also offers a wide range of phone adapters to connect your cell phone to an signal booster or directly to the antenna. To find the adapter for your phone, visit www.WilsonElectronics.com or call toll free 866-294-1660.

Disclaimer: The information provided by Wilson Electronics, Inc. is believed to be complete and accurate. However, no responsibility is assumed by Wilson Electronics, Inc. for any business or personal losses arising from its use, or for any infringements of patents or other rights of third parties that may result from its use.

Copyright © 2011 Wilson Electronics, Inc. All rights reserved.

Contact Wilson Electronics Technical Support Team with any questions at 866-294-1660
Or email: tech@wilsonelectronics.com Hours: 7am to 6pm MST.

30-Day Money-Back Guarantee

All Wilson Electronics products are protected by Wilson Electronics 30-day money-back guarantee. If for any reason the performance of any product is not acceptable, simply return the product directly to the reseller with a dated proof of purchase.

90-Day Warranty

Wilson Electronics antennas are warranted for ninety (90) days against defects in workmanship and/or materials. Warranty cases may be resolved by returning the product directly to the reseller with a dated proof of purchase.

Antennas may also be returned directly to the manufacturer at the consumer's expense, with a dated proof of purchase and a Returned Material Authorization (RMA) number supplied by Wilson Electronics. Wilson Electronics shall, at its option, either repair or replace the product. Wilson Electronics will pay for delivery of the repaired or replaced product back to the original consumer if located within the continental USA.

This warranty does not apply to any signal boosters determined by Wilson Electronics to have been subjected to misuse, abuse, neglect, or mishandling that alters or damages physical or electronic properties.

RMA numbers may be obtained by phoning Technical Support at 866-294-1660.

Antenna Specifications

Part Number	301111
Number of Elements	8
Frequency Range	700-800 MHz / 824-894 MHz / 880-960 MHz
Impedance	50 ohms
Gain	10 dBi 700-800 MHz / 10.8 dBi 824-894 MHz / 8.8 dBi 880-960 MHz
Maximum Power	50 watts
Polarization	Vertical
Connector	N-Female
Length (w/ mount)	32.5 in / 82.6 cm
Weight (w/ mount)	1.31 lbs / 597 kg
Material	Aluminum
Wind Surface Area	< 100 cm ²



3301 East Deseret Drive, St. George, UT 84790

For additional Technical Support visit www.WilsonElectronics.com
or email at: tech@wilsonelectronics.com

Phone: 866-294-1660 Local: 435-673-5021 Fax: 435-656-2432
www.twitter.com/WilsonCellular www.facebook.com/WilsonCellular