

Enterprise 4300

SKU: 460152

FEATURES

- Three outdoor antenna ports to target multiple carrier towers.
- Four independently controlled indoor antenna ports built in.
- Wired or LTE WilsonPro Cloud access for remote functionality.
- Up to 26 dBm in uplink power and 17 dBm in downlink power.
- XDR technology to virtually eliminate shutdown or signal loss.
- 4.3-inch LCD touchscreen for an enhanced user-experience.
- Works with ALL phones and cellular devices on ALL carriers.

⚠️ WARNING: Cancer and Reproductive Harm - www.P65Warnings.ca.gov.

Kit Includes



Enterprise 4300
or Enterprise 4300R
Booster



Outside
Directional Antenna
(314411)



Inside Dome
Antenna x4
(304412)



Lightning Surge
Protector
(859902)



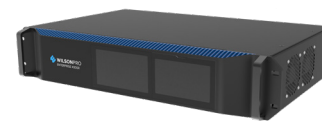
2 ft. Wilson400
Cable
(952402)



100ft Low-Loss
Wilson400 Cable x5
(952300)



RACK MOUNT OPTION:



Enterprise
4300R
SKU: 460153

About

The WilsonPro **Enterprise 4300/4300R** is a commercial-grade, in-building cellular amplifier that represents the latest in cell signal boosting technology—including a revolutionary industry-first, three outdoor-antenna-port configuration. Depending on cell tower locations, using up to three outdoor antennas (each dedicated to a specific frequency band to collectively amplify signals from multiple towers) helps maximize coverage in commercial spaces up to 100,000 sq.ft.*

Based on user need or preference, the Enterprise 4300/4300R can also utilize “common mode” as a default; using only a single outdoor (donor) antenna and a single port to receive cell signal.

With wired or LTE access (using the built-in cellular modem) to the WilsonPro Cloud for remote functionality, the Enterprise 4300/4300R provides integrators and building managers with the capability to remotely manage, monitor, and adjust their amplifier, as well as receive real-time updates on a smartphone or tablet. Immediate notification of issues, such as system failure, oscillation, or change in signal strength is also provided via text or email.

The Enterprise 4300/4300R generates up to 26 dBm in uplink power—enabling it to reach towers at much greater distances. With up to 17 dBm in downlink power, it's also one of the most powerful amplifiers in its price range. With all four indoor-antenna ports equipped with up to 17 dBm downlink power of their own, each of the Enterprise 4300/4300R's four indoor antennas can effectively broadcast signal. The “R” model name signifies its rack-mount option.

This amplifier includes a 3-year manufacturer's warranty and a 30-day money-back guarantee.

*Depending on outside signal conditions.

Specifications

MODEL NUMBER	460152* • 460153*	
FREQUENCIES	Band 12/17	700 MHz
	Band 13	700 MHz
	Band 5	850 MHz
	Band 4	1700/2100 MHz
	Band 25	1900 MHz
MAX GAIN	70 dB	
IMPEDANCE	50 Ohm	
POWER	110 - 240 V AC, 50 - 60 Hz, 30 W	
CONNECTORS	N-Female	
BOOSTER DIMENSIONS	19 x 12 x 2.5 • 17.5 x 12 x 3.75 in	
BOOSTER WEIGHT	16.930 lbs • 9.860 lbs	

Detailed Specifications

4300 / 4300R					
SKU	460152 / 460153				
Model Number	460152 / 460153				
FCC ID	PWO460052 / PWO460053				
Connectors	N-Connectors				
Antenna Impedance	50 Ohms				
Frequency	698-716 MHz, 729-746 MHz, 777-787 MHz, 824-894 MHz, 1850-1990 MHz, 1710-1755/2110-2155 MHz				
Power output for single cell phone (Uplink) dBm	700MHz Band12/17	700MHz Band13	800MHz	1700MHz	1900MHz
	22.9	23.1	24.6	22.8	25.5
Power output for single cell phone (Downlink) dBm	700MHz Band12/17	700MHz Band13	800MHz	2100MHz	1900MHz
	16.9	16.7	16.8	16.6	16.6
Noise Figure	5 dB nominal				
Isolation	> 90 dB				
Power Requirements	120V AC 0.5A				

Each Signal Booster is individually tested and factory set to ensure FCC compliance. The Signal Booster cannot be adjusted without factory reprogramming or disabling the hardware. The Signal Booster will amplify, but not alter incoming and outgoing signals in order to increase coverage of authorized frequency bands only. If the Signal Booster is not in use for five minutes, it will reduce gain until a signal is detected. If a detected signal is too high in a frequency band, or if the Signal Booster detects an oscillation, the Signal Booster will automatically turn the power off on that band. For a detected oscillation the Signal Booster will automatically resume normal operation after a minimum of 1 minute. After 5 (five) such automatic restarts, any problematic bands are permanently shut off until the Signal Booster has been manually restarted by momentarily removing power from the Signal Booster. Noise power, gain, and linearity are maintained by the Signal Booster's microprocessor.

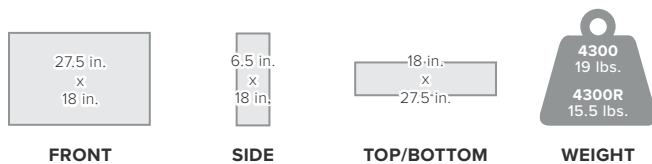
The Manufacturer's rated output power of this equipment is for single carrier operation. For situations when multiple carrier signals are present, the rating would have to be reduced by 3.5 dB, especially where the output signal is re-radiated and can cause interference to adjacent band users. This power reduction is to be by means of input power or gain reduction and not by an attenuator at the output of the device.

ASSEMBLED IN THE USA



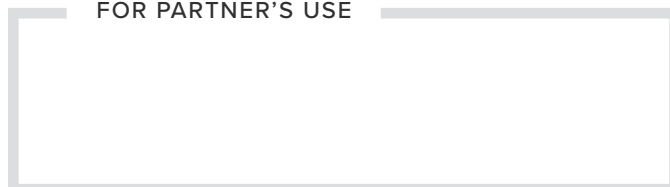
Package Dimensions

27.5 L x 18 H x 6.5 W



MASTER CARTON: None

FOR PARTNER'S USE



460152-460153_4300-4300/R SS US 072619c

Support



3 Year Warranty from Purchase

Website: www.wilsonpro.com/support

Phone: +1 866 294 1660
Monday to Saturday

UPC



8 11815 02989 2

8 11815 02990 8